



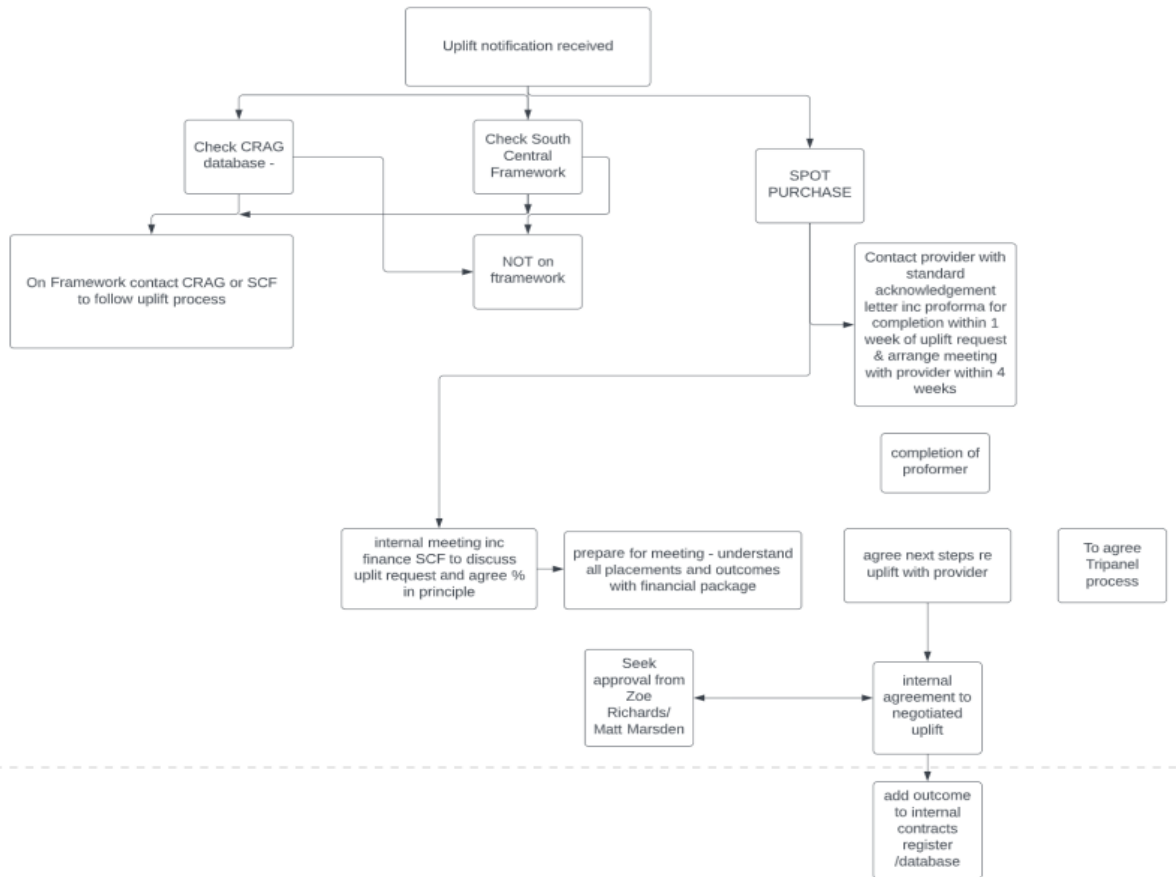
Inflationary Uplift Request process

1. Purpose of report

- 1.1 To respond to SBC re evidence of assurance that SCF have a process in place to negotiate with providers around inflationary uplift requests and where contracts are in place that rises are in accordance with contract terms.

2. Inflationary uplift Request Process

- 2.1 Pressures have arisen from contract inflation from providers of support to children with disabilities - £88k above budget assumptions.
- 2.2 SCF commissioned PeopleToo to introduce a robust process for negotiating inflationary requests on 4th May 2022. PeopleToo developed a form for completion by suppliers for any such inflationary requests, this was sent out to all suppliers on 16th June 2022. The form captured details of why an inflationary uplift was required providing details to support the request.
- 2.3 SCF have received numerous requests for inflation uplifts and have introduced a process for providers to follow allowing for detailed scrutiny of the cost uplifts on the suppliers to assess for reasonableness. The process flowchart is below.



3. Requests received

3.1 2 requests for uplifts were received in relation to children with disability services and considered:

- Provider A – completed proforma in Appendix 1
- Provider B – completed proforma in Appendix 2

3.2 Below is a table of the Children with Disabilities support contracts, the uplift request and what was agreed



| Contract | Contract Sum £'000 | Requested | | Agreed - based on 21/22 spend | |
|------------------------------------|-----------------------|-----------|------------|----------------------------------|-----------|
| | | % | £'000 | % | £'000 |
| Arbour Vale School | 85 | 0.0% | | | |
| Beehive | 38 | 0.0% | | | |
| Thames Valley Adventure Playground | 4 | 0.0% | | | |
| Camp Mohawk | 3 | 0.0% | | | |
| The Light * | 215 | 18% - 44% | 96 | 18% - 36% | 78 |
| Parvaaz * | 191 | 4% - 6% | 11 | 4% - 6% | 11 |
| Total | 536 | | 106 | | 88 |

** Individual Packages of Care (POCs) are purchased so contract sum is based on 21/22 spend*

Appendices

Provider A proforma



The Light uplift
request.xlsx

Provider B proforma



Parvaaz Uplift
Request.xlsx



A hands-on approach to help children in Slough be
..... Safe, Secure and Successful