

sloughmuseum

Slough Museum – stakeholder response to Slough Libraries consultation

January 2022

Overview

Slough Museum is an independent museum and registered charity. Charity number 285211

Slough Museum Trust was founded in 1982 by a group of local people who wanted to create a museum to share knowledge about local and general history, topography and archaeology of Slough and surrounding districts.

<https://sloughmuseum.co.uk/>

Our mission today is to build a sense of pride in Slough. We develop imaginative and inclusive projects and displays and encourage people to share their stories and knowledge of Slough as a place of pioneers and innovators.

We are the only organisation in Slough that has a remit to collect, conserve and communicate the town's heritage. We explore and celebrate Slough's past, present and future.

Slough Museum's Charity's objects are: To advance the education of the public in local & general history, topography & archaeology by the provision, maintenance and administration of a Museum for Slough & the surrounding district.

The Collection covers a period of around 10,000 years – from woolly mammoths to the present day and charts the development of the town of Slough, its public, social and domestic life, developments in science, technology, agriculture and industry and the impact of these on the town in the past, present and the future.

Since collecting began in 1985, Slough Museum has acquired around 3,500 objects and documents (consisting of prints, paintings, drawings; maps; numismatics; documents; decorative art; costume; geology; archaeology; occupational tools and equipment; Slough-made products & packaging; toys and other juvenilia) and 7,500 photographs. The Museum also holds approx. 32,000 negative packets and strips from Slough Observer newspaper and a small quantity of oral history recordings, video tapes and film reels.



Slough Museum at The Curve

Slough Museum are responding to the Slough Borough Council Library consultation as a key stakeholder in the town and particularly in The Curve. This partnership with Slough Libraries at The Curve includes Museum Pods, The Curve Gallery and community activity.

Museum Pods

Slough Museum is proud to have eight Pods in The Curve, the central library and cultural hub for Slough. These Pods were fundraised for by the museum to be in place when The Curve opened five years ago.

These themed Pods, located over three floors, explore the heritage of the town, focusing on its nationally important industrial heritage and the history of its pioneering, vibrant community. They feature the people of Slough, from the Herschel Family, who made significant advancements in astronomy, to the people living here today; focussing on domestic and community life, from important places and leisure activities, to community endeavours during the war periods. Pods include sound, visuals and short films.

Schools visit the Pods as part of tours and the museum has fundraised for several community projects to be delivered in partnership with Slough Libraries themed on the Pods.

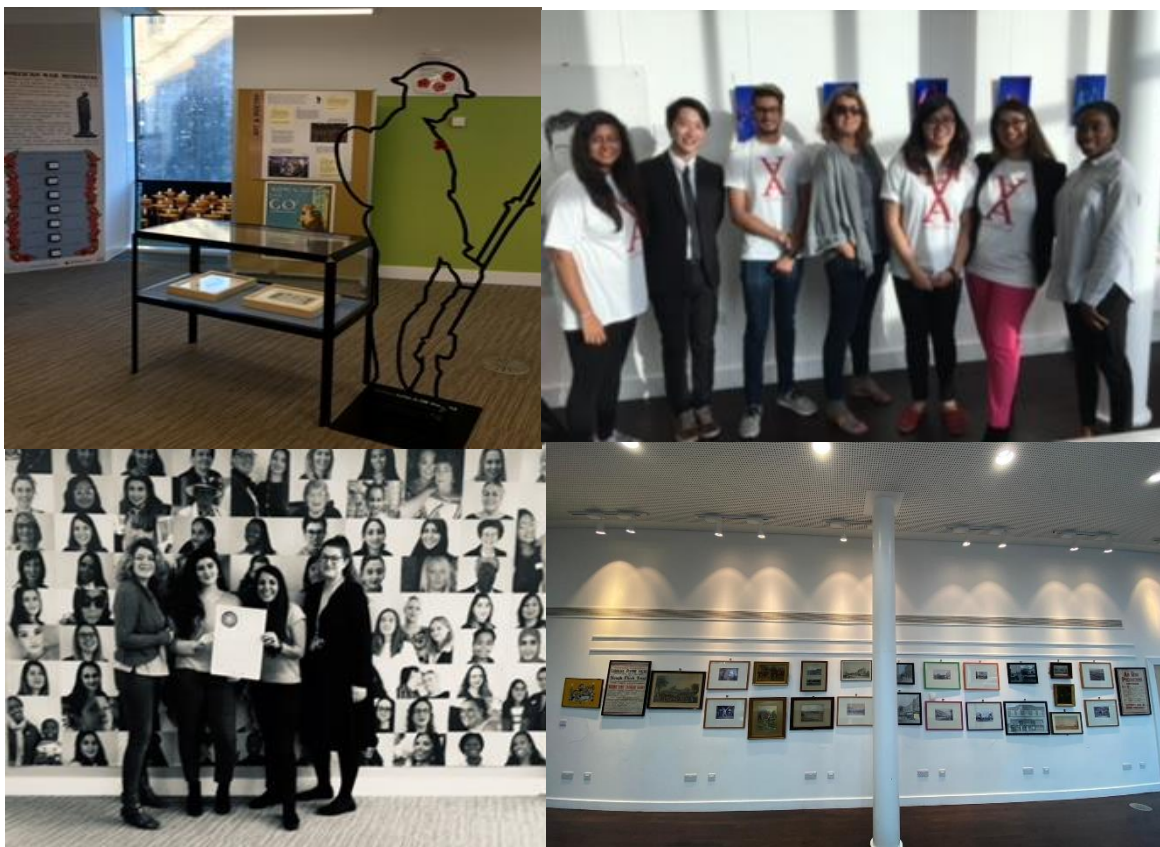
The Curve Gallery and display space

In addition to the Pods, Slough Museum have fundraised to use The Curve Gallery space and the space upstairs for several community projects to be delivered in partnership with Slough Libraries.

This includes *100 Women*, a project with a Slough young person who took photographs of one hundred Slough women to celebrate their lives and stories as part of the centenary of women's right to vote; *Light The Candles* an exhibition of Slough objects relating to the First World War to mark the centenary of Armistice Day which involved story telling and craft workshops to create a poppy wall of remembrance.

Slough Museum supported Slough young people to create their own exhibitions in The Curve Gallery leading to their achievement of Arts Award, a national qualification recognising leadership.

Slough Museum are currently displaying items from our collection in The Curve Gallery.



The Curve Community Activity

Slough Museum have also fundraised for several community projects to be delivered in partnership with Slough Libraries for Slough residents.

This has included *Past/Present/Future – The Spirit of Dickens in Slough* marking 175 years since Dickens classic *A Christmas Carol* was published (Dickens had a Slough based publisher at The Mere). This winter festival included workshops delivered by the museum and our partners from The Dickens Museum, London. It also included a giant Peace Poem installed outside The Curve.



Spark Festival focused on the heritage of Slough based 18th century astronomical pioneers the Herschel family with lantern workshops and a street procession starting from The Curve.



Other projects have included a focus on literacy, reading, storytelling, craft and local history.

In 2018 BBC Radio Berkshire brought their 80 Things Slough has given the World exhibition to The Curve in partnership with Slough Museum. Slough Museum also run Make with the Museum at The Curve Club on the last Saturday of the month, taking this online during lockdown and delivering ten sessions via Slough Libraries Facebook. We are currently delivering a story writing project in partnership with Slough Libraries to culminate in public sharing at The Curve.

Slough Museum urge Slough Borough Council to consider resident wellbeing, connectedness, and the pride in our town that Slough Museum located at The Curve can bring, along with significant proven leverage for community projects. The Curve fully open and staffed is the cultural hub people from Slough and beyond deserve. It offers Slough Museum the opportunity to be part of that cultural offer and have a presence in the heart of the town. We believe the only consultation option is therefore: Reduce the money available to spend on buying publications.